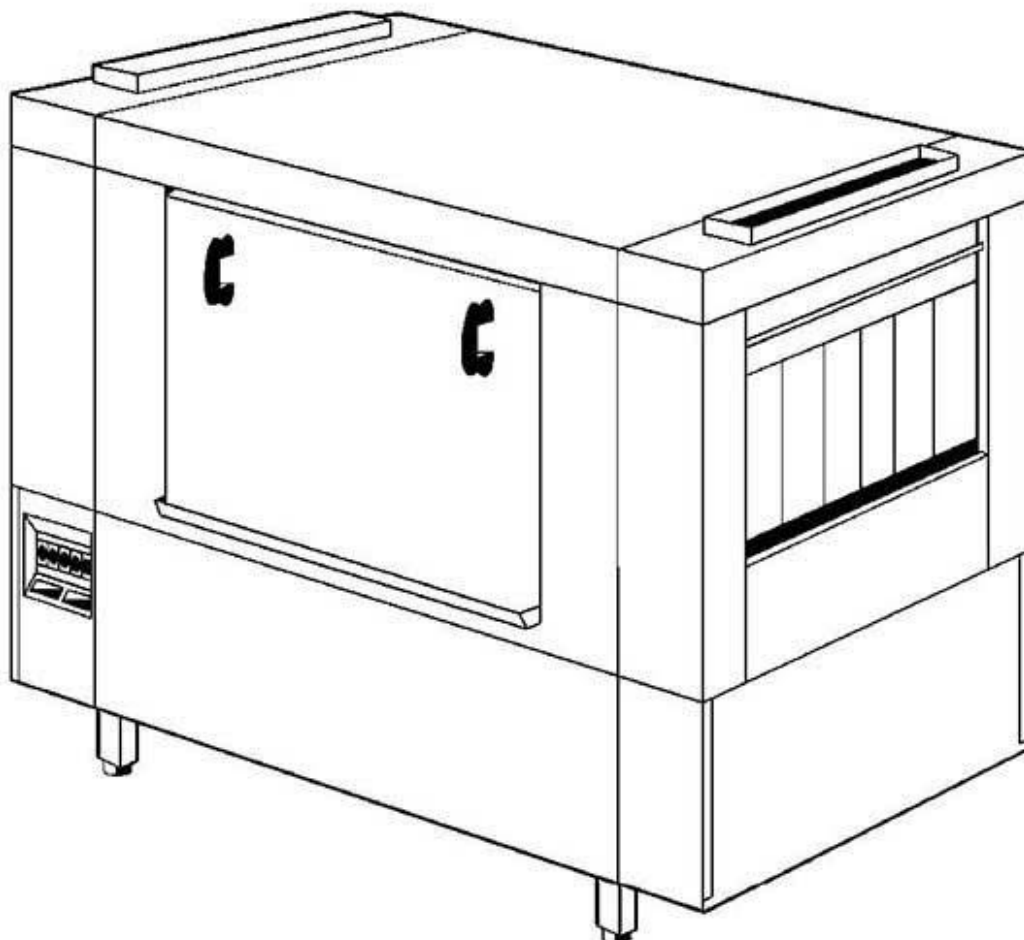


winterhalter

Spare Parts List WKTS-WZN 1500

Edited 11/94
Revised 02/01

Part no. 89001278



Summary

Water supply, water inlet	Page	1 and 2
Water drain, Mediamat, intermediate rinsing	Page	3 and 4
Wash system I	Page	5 and 6
Wash system II	Page	7 and 8
Rinsing I	Page	9 and 10
Rinsing II ⇒ 09.93	Page	11 and 12
Rinsing II 10.93 ⇒	Page	13 and 14
Drive	Page	15 and 16
Periodical rinsing	Page	17 and 18
Curtain	Page	19 and 20
Housing, panel	Page	21 and 22
Electrical parts I	Page	23 and 24
Electrical parts II	Page	25 and 26
Electrical parts III	Page	27 and 28
Electrical parts IV	Page	29 and 30

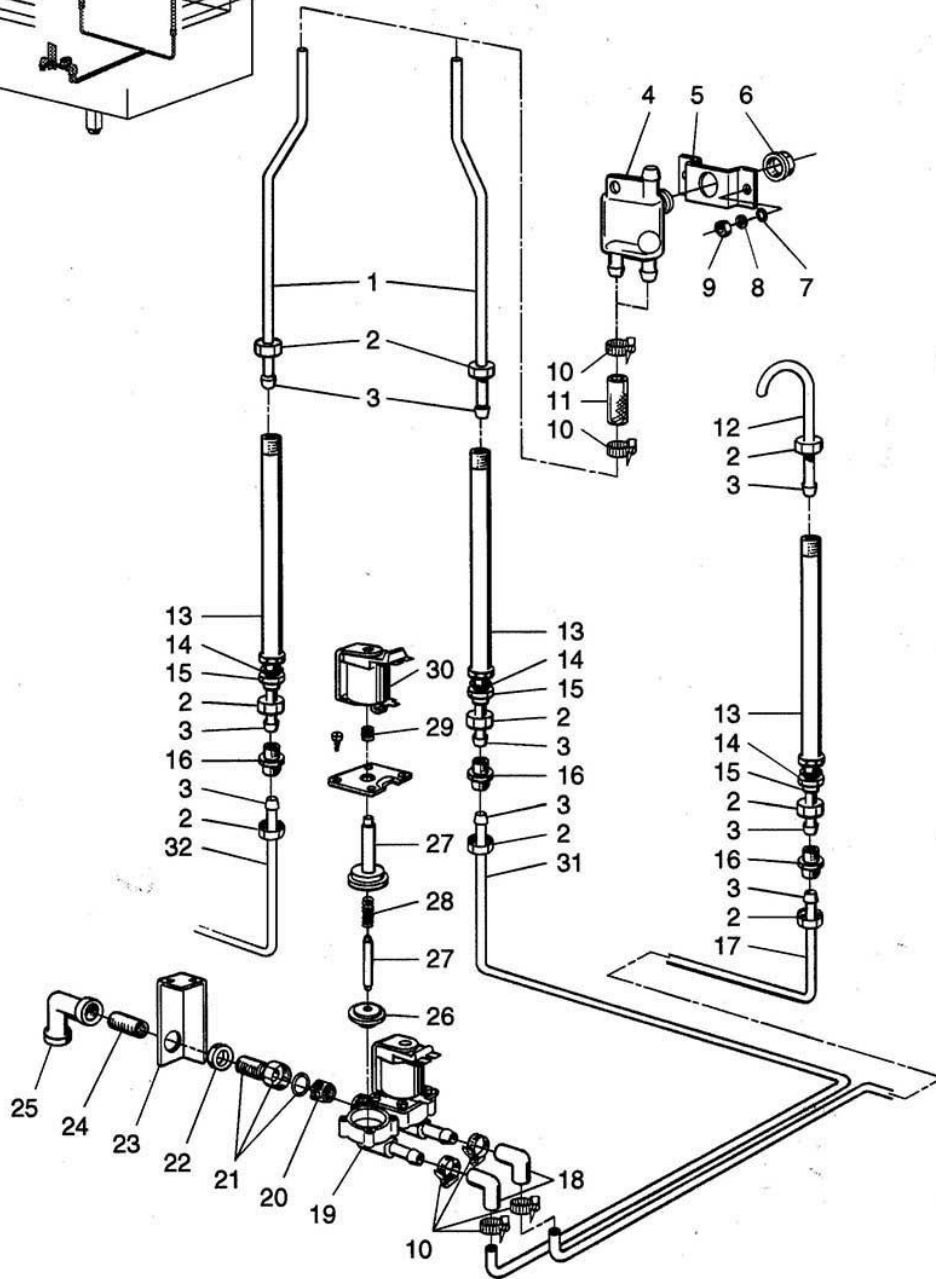
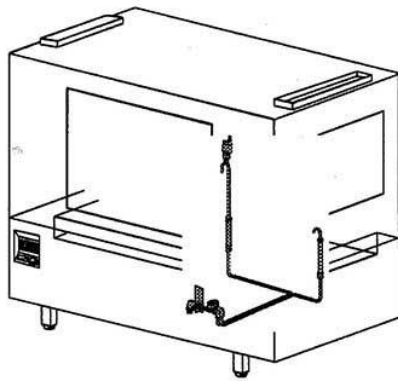
Racks and accessories see separate list.

The parts marked ★ are also contained in other spare parts lists.

In column „Pc.“ the necessary number is indicated, as far as more than 1 part is installed and if the part is no standard part.

WKTS-WZN 1500

Wasserzulauf, Wassereinlauf
Water supply, water inlet
Alimentation d'eau, arrivée d'eau



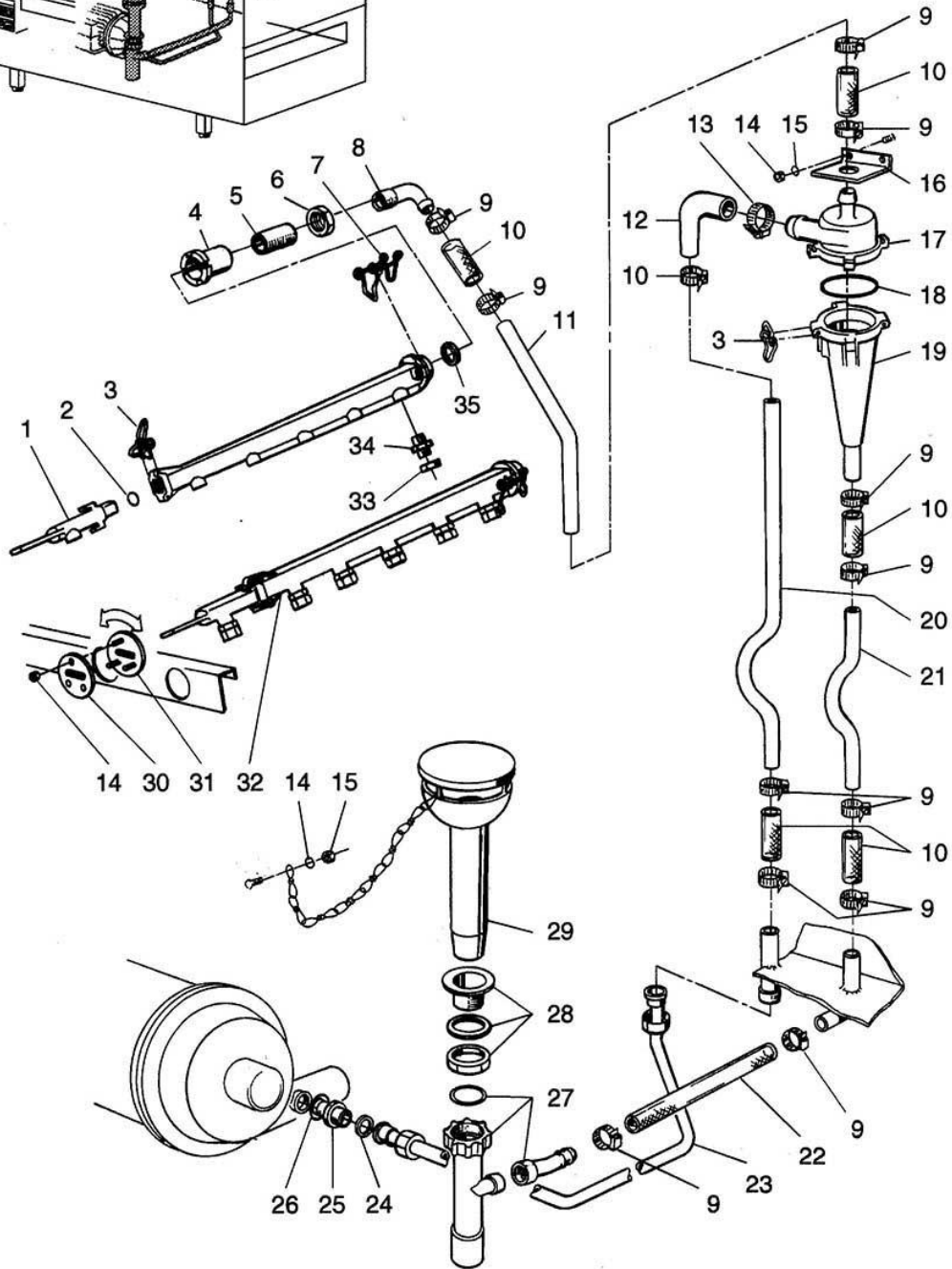
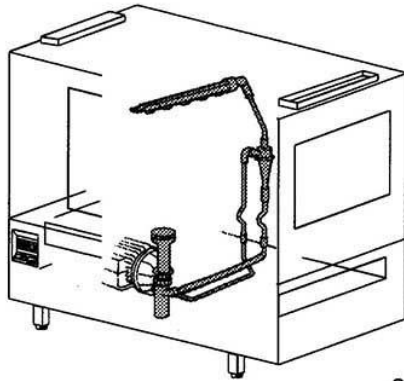
WKTS-WZN 1500

Water supply, water inlet

Pos.	Designation	Part no.	Pc.	Notes
1	Connection pipe \varnothing 12 x 1 x 322	70001394	2	until 09.93
	Connection pipe \varnothing 12 x 1 x 512	70000185	2	as from 10.93
2	Coupling nut 1/2" BSP x \varnothing 12,2	29 07 301	★ 9	
3	Olive \varnothing 12	29 07 300	★ 9	
4	Backflow restrictor, top, blue	35 01 193	★	until 09.93
	Backflow restrictor, lateral, red, horizontal	35 01 194	★	as from 10.93
5	Support for backflow restrictor	70000187	★	
6	Nut for backflow restrictor	70000188	★	
7	Washer \varnothing 6,4	22 01 302	★	
8	Spring washer B 6	23 03 300	★	
9	Hexagon nut M 6	21 05 304	★	self-securing
10	Hose clip \varnothing 14 - \varnothing 22	28 02 301	★ 8	
11	Hose piece \varnothing 13,5 x 3,5 x 60 lg.	40 02 002	★ 2	per metre
12	Pipe elbow \varnothing 12 x 1 x 137	70000186	★	until 09.93
	Tank inlet hose \varnothing 10 x 5 x 120 lg.	40 03 007		as from 10.93
n.p.	Hose socket \varnothing 18 x 50	29 06 306		
13	Inlet pipe DVGW cpl. 320 lg.	70000181	★ 3	until 09.93
	Inlet pipe DVGW cpl. 512,5 lg.	70001391	3	as from 10.93
14	Seal \varnothing 26 x \varnothing 21 x 2	27 04 006	★ 3	
15	Locking nut 1/2" BSP x 8	30 09 201	★ 3	
16	Double nipple 1/2" BSP x 38	30 11 301	★ 3	
17	Connection pipe for tank \varnothing 12 x 1 x 1096,5	70001191	★	for feed direction r-l
n.p.	Connection pipe for tank \varnothing 12 x 1 x 1424,5	70001190	★	for feed direction l-r
18	Hose elbow \varnothing 13 x 4	40 03 001	★ 2	
19	Body part for solenoid valve	31 06 116	★	
n.p.	Double solenoid valve 220/240 V 50/60 Hz	31 06 182	★	
20	Dirt sieve red	31 06 118	★	
21	Insert part cpl. 1/2" BSP x G 3/4"	30 03 111	★	
22	Locking nut G 3/4" x 10	30 09 209	★	
23	Support for solenoid valve	70000365		
24	Reduction nipple G 3/4" x 1/2" BSP x 35	30 12 209		
25	Angle G 3/4"	30 02 107		
26	Diaphragm	31 06 047	★	
27	Plunger with bush	31 06 073	★	
28	Spring	31 06 049	★	
29	Spring	31 06 117	★	
30	Coil 220/240 V 50/60 Hz	31 06 046	★	
31	Connection pipe to DVGW \varnothing 12 x 1 x 1336,5	70000958	★	for feed direction r-l
n.p.	Connection pipe to DVGW \varnothing 12 x 1 x 1400	70000918	★	for feed direction l-r
32	Connection pipe from DVGW \varnothing 12 x 1 x 1755	70001192	★	for feed direction r-l
n.p.	Connection pipe from DVGW \varnothing 12 x 1 x 1185	70001193	★	for feed direction l-r

WKTS-WZN 1500

Wasserablauf, Mediamat, Zwischenspülung
Water drain, Mediamat, intermediate rinsing
Ecoulement d'eau, médiamat, rinçage intermédiaire



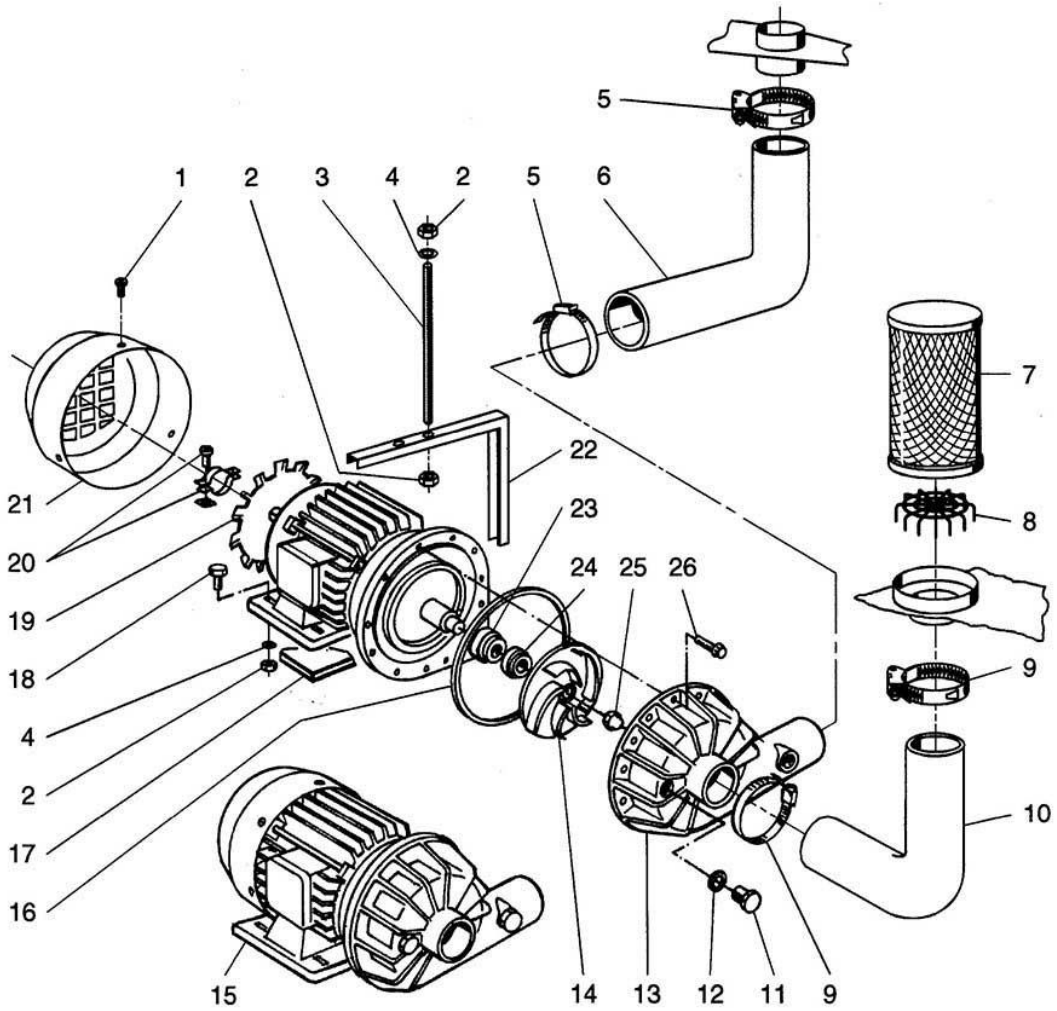
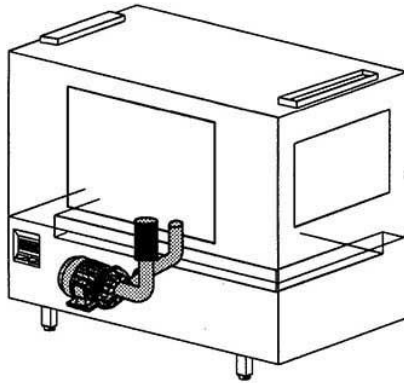
WKTS-WZN 1500

Water drain, Mediamat, intermediate rinsing

Pos.	Designation	Part no.	Pc.	Notes
1	End piece 90 degrees	35 01 015	★	
2	O-ring ø 18 x 1,5	27 07 039	★	
3	End piece clip	28 04 041	★	6
4	Coupling nut G 3/4" x 32	35 01 006	★	
5	Reduction nipple G 3/4" x 1/2" BSP x 35	30 12 209	★	
6	Locking nut G 3/4" x 10	30 09 209	★	
7	Wash arm clip ø 2,8	28 04 040	★	
8	Mediamat - connection 1/2" BSP x ø 18	29 06 205		
9	Hose clip ø 20 - ø 30	28 02 306	★	13
10	Hose ø 19 x 4 x 70 lg.	40 01 016	★	per metre
11	Inlet pipe ø 18 x 1 x 248	55 05 023	★	
12	Reduction elbow ø 30 x ø 16	40 03 034	★	
13	Hose clip ø 24 - ø 44	28 02 309	★	
14	Hexagon nut M 5	21 05 302	★	self-securing
15	Washer ø 5,3	22 01 300	★	
16	Supporting angle for Mediamat	61000658	★	
17	Top part inlet ø 30	35 01 124	★	
18	O-ring ø 51 x 3	27 07 043	★	
19	Accelerator ø 75 x 169 x ø 4,3	35 01 035	★	
n.p.	Mediamat cpl.	55 27 040	★	
20	Mediamat - inlet pipe ø 18 x 1 x 595,5 lg.	55 05 045	★	
21	Mediamat - drain pipe ø 18 x 1 x 441 lg.	55 05 046	★	
22	Hose ø 19 x 4 x 430 lg.	40 01 016	★	per metre
23	Mediamat - inlet cpl.	70000397	★	from 05.89 - until 09.91
	Mediamat - inlet cpl.	70000911	★	as from 10.91
24	Seal ø 24 x ø 17 x 2	27 09 009	★	
25	Mediamat - connection nipple 1/2" BSP x G 3/4" x 32	30 11 502	★	
26	O-ring ø 20 x 3,5	27 07 040	★	
27	Drain piece cpl.	30 15 519	★	
28	Drain outlet bottom part cpl.	29 04 212	★	
29	Stand pipe with funnel cpl.	55 04 019	★	
30	Clamping plate	55 08 013	★	
31	Clamping plate with studs cpl.	55 08 012	★	
32	Wash arm cpl.	55 07 002	★	
33	Wash jet cap 1/2" BSP x ø 5	29 10 526	★	6
34	Wash jet base 1/2" BSP	29 10 529	★	6
n.p.	Wash jet cpl. 1/2" BSP x ø 5	29 10 527	★	6
35	O-ring ø 27 x 4	27 07 016	★	

WKTS-WZN 1500

Waschsystem I
Wash system I
Système de lavage I



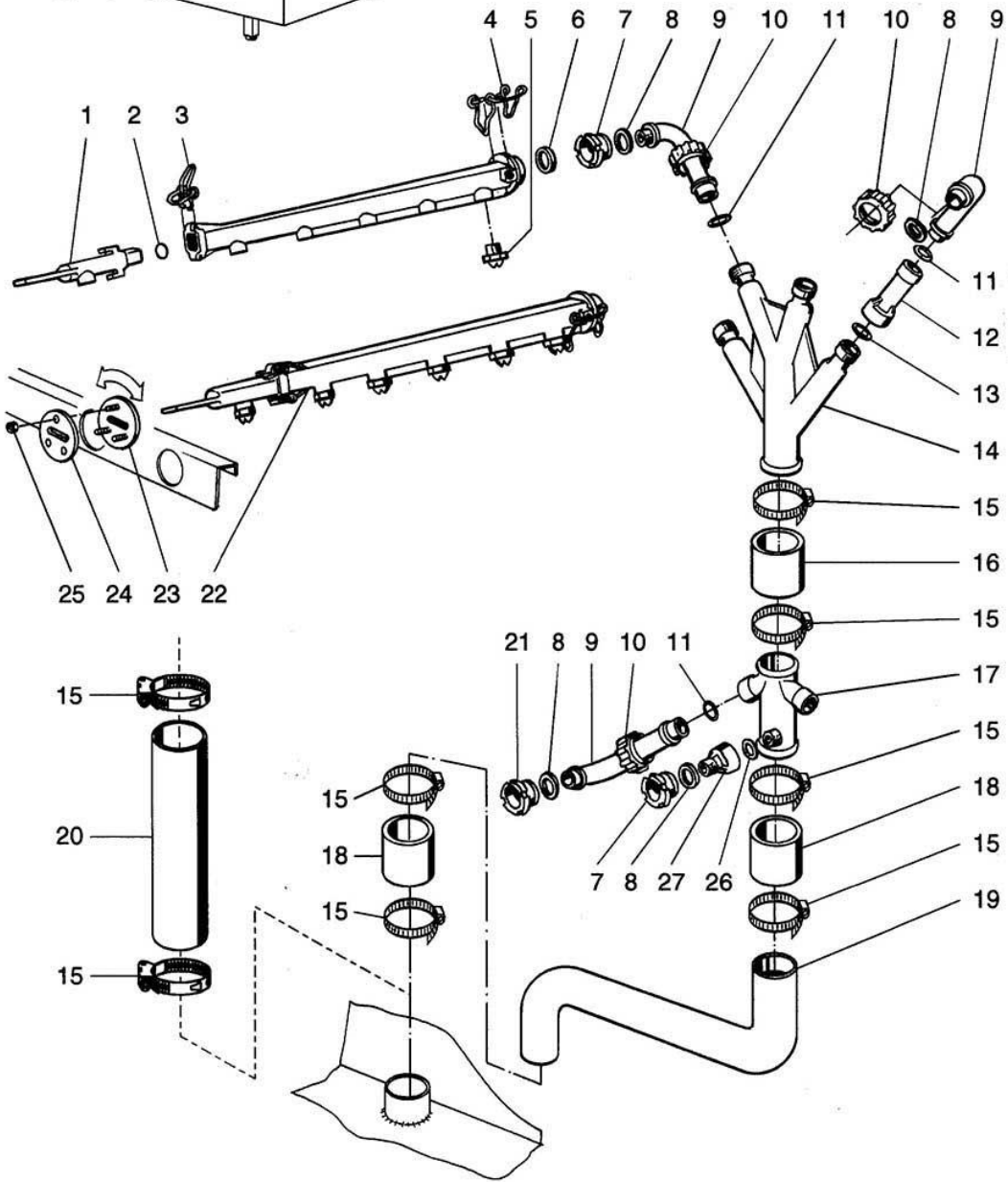
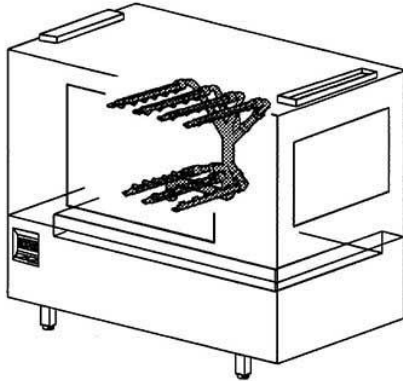
WKTS-WZN 1500

Wash system I

Pos.	Designation	Part no.	Pc.	Notes
1	Lens screw M 4 x 8	20 10 310	★	
2	Hexagon nut M 8	21 01 305	★	
3	Threaded bar M 8 x 192	55 05 040	★	
4	Spring washer B 8	23 03 301	★	
5	Hose clip ø 47 - ø 67	28 02 303	★	2
6	Outlet hose elbow	70000907	★	
7	Pump sieve cpl.	55 13 002	★	
8	Suction basket	55 13 112	★	
9	Hose clip ø 62 - ø 82	28 02 120	★	2
10	Hose elbow ø 62 x 8 x 150 x 130	40 03 027	★	
11	Blind plug 1/2" BSP x 20,5	35 01 108	★	
12	O-ring ø 20 x 3,5	27 07 040	★	
13	Pump housing	31 02 204	★	
14	Pump impeller 50 Hz ø 109	31 02 273	★	for pump 1,1 kW
	Pump impeller 60 Hz ø 96	31 02 274	★	
	Pump impeller 50 Hz ø 116	31 02 206	★	for pump 1,7 kW
	Pump impeller 60 Hz ø 94	55 14 035	★	
15	Wash pump cpl. 1,1 kW 3x230-240/400-420V 50Hz	31 02 268	★	
16	O-ring ø 158,35 x 3,53	31 02 209	★	
17	Rubber pad	71000283	★	
18	Hexagon bolt M 8 x 20	20 01 312	★	
19	Cooling fan	31 02 211	★	
20	Fixing clip cpl.	31 02 218	★	
21	Fan cover	31 02 212	★	
22	Pump support cpl.	55 05 039	★	
23	Motor shaft seal	27 10 013	★	
24	Locking ring	27 10 014	★	
25	Dome nut M 8	21 10 305	★	self-securing
26	Hexagon bolt M 4 x 22	20 01 021	★	
n.p.	Pump cpl. 1,1 kW 3 x 230 (220)/400 (380) V 60 Hz	31 02 284		
	Pump cpl. 1,1 kW 3 x 240/420 V 60 Hz	31 02 328		
	Pump cpl. 1,1 kW 3 x 440 V 60 Hz	31 02 281		
	Pump cpl. 1,1 kW 3 x 200 V 50 Hz	84000103		
	Pump cpl. 1,1 kW 3 x 200 V 60 Hz	84000105		
n.p.	Distributor pipe cpl. 200 lg.	55 06 029		until mach. no. 0187773
	Pump hose ø 50 x 8 x 70, 80, 180	40 02 006	★	3 per metre
	Hose clip ø 47 - ø 67	28 02 115	★	6

WKTS-WZN 1500

Waschsystem II
Wash system II
Système de lavage II



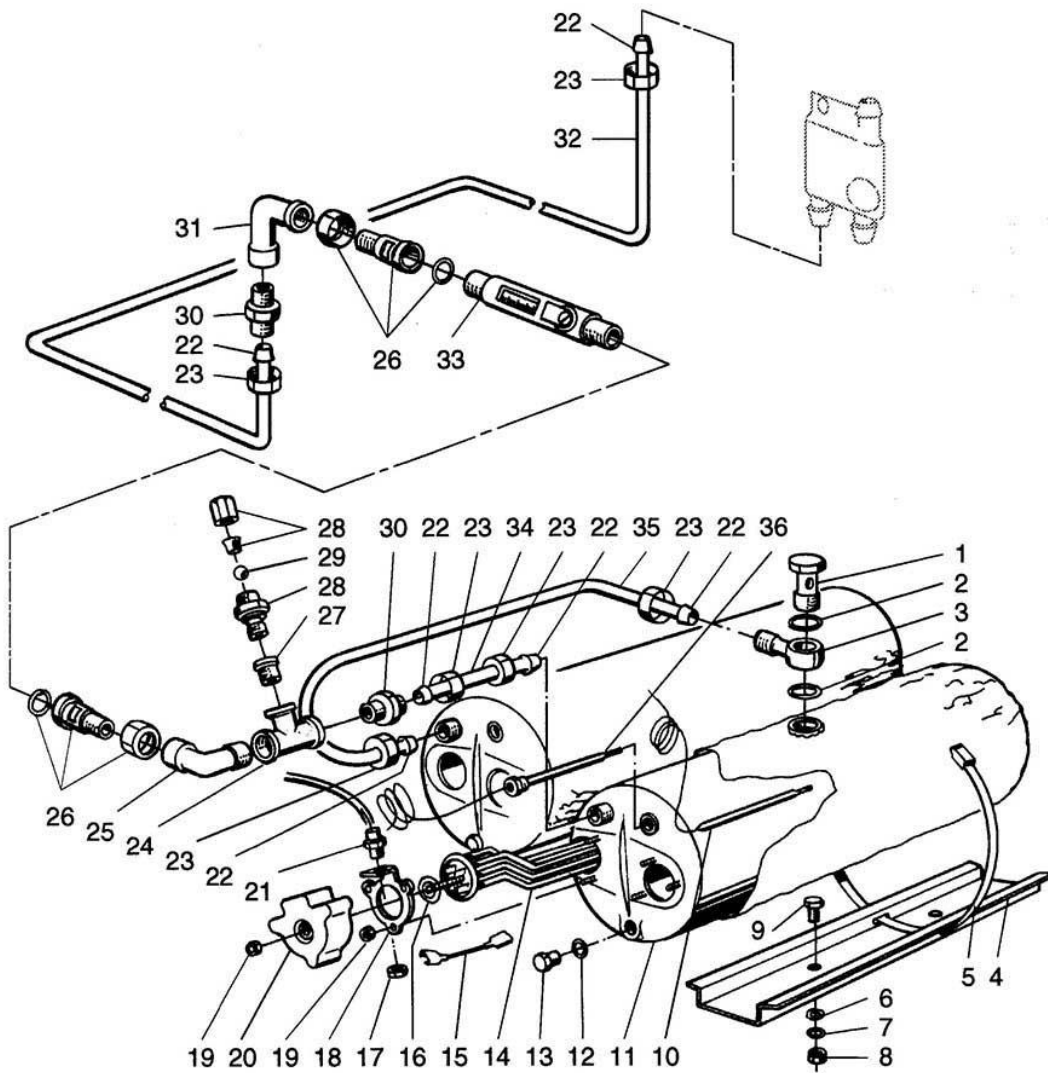
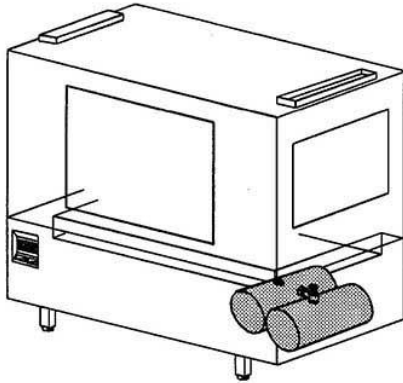
WKTS-WZN 1500

Wash system II

Pos.	Designation	Part no.	Pc.	Notes
1	End piece 90 degrees	35 01 015	★ 7	
2	O-ring \varnothing 18 x 1,5	27 07 039	★ 7	
3	End piece clip \varnothing 2	28 04 041	★ 14	
4	Wash arm clip \varnothing 2,8	28 04 040	★ 7	
5	Slottet jet 1/2" BSP	29 10 514	★ 42	
	Wash jet	29 10 530	★ 42	until mach. no. 0187773
6	O-ring \varnothing 27 x 4	27 07 016	★ 7	
7	Coupling nut G 3/4" x 32	35 01 006	★ 5	
8	Seal \varnothing 36 \varnothing 26 x 2	27 01 003	★ 7	
9	Manifold elbow G 3/4"	35 01 005	★ 6	
10	Coupling nut G 1 1/4" x 24	35 01 004	★ 6	
11	O-ring \varnothing 24 x 3	27 07 026	★ 6	
12	Extension piece G 1 1/4" x 133	35 01 003	★ 2	
13	Seal \varnothing 39 x \varnothing 30 x 2	27 02 001	★ 2	
14	Wash manifold - upper part	55 06 045		
15	Hose clip \varnothing 47 - \varnothing 67	28 02 303	★ 4	
16	Pump hose \varnothing 50 x 8 x 100	40 02 006	★	per metre, with feed direction r-l
17	Wash manifold - bottom part	35 06 106	★	
18	Pump hose \varnothing 50 x 8 x 60	40 02 006	★ 2	per metre, with feed direction r-l
19	Pipe elbow \varnothing 50 x 3; 70 x 335 x 125	35 06 105	★	only with feed direction r-l
20	Pump hose \varnothing 50 x 8 x 270	40 02 006	★	per metre, with feed direction l-r
21	Coupling nut with screen G 3/4" x \varnothing 15	55 06 043	★ 2	
22	Wash arm cpl.	65000034	★ 7	
23	Clamping plate with studs cpl. \varnothing 50	55 08 012	★ 7	
24	Clamping plate \varnothing 50 x 1,5	55 08 013	★ 7	
25	Hexagon nut M 5	21 01 303	★	
26	Seal \varnothing 42 x \varnothing 27 x 2	27 09 003	★	
27	Extension piece G 3/4" x 36	35 01 019	★	
n.p.	Detergent inlet cpl.	70000270		
n.p.	Locking screw 3/8"	30 08 201		for conductance measuring
	Seal \varnothing 24 x \varnothing 17 x 2	27 09 009	★	electrode
	Locking nut 3/8" BSP	30 09 200		

WKTS-WZN 1500

Nachspülung I
Rinsing I
Rinçage I



WKTS-WZN 1500

Rinsing I

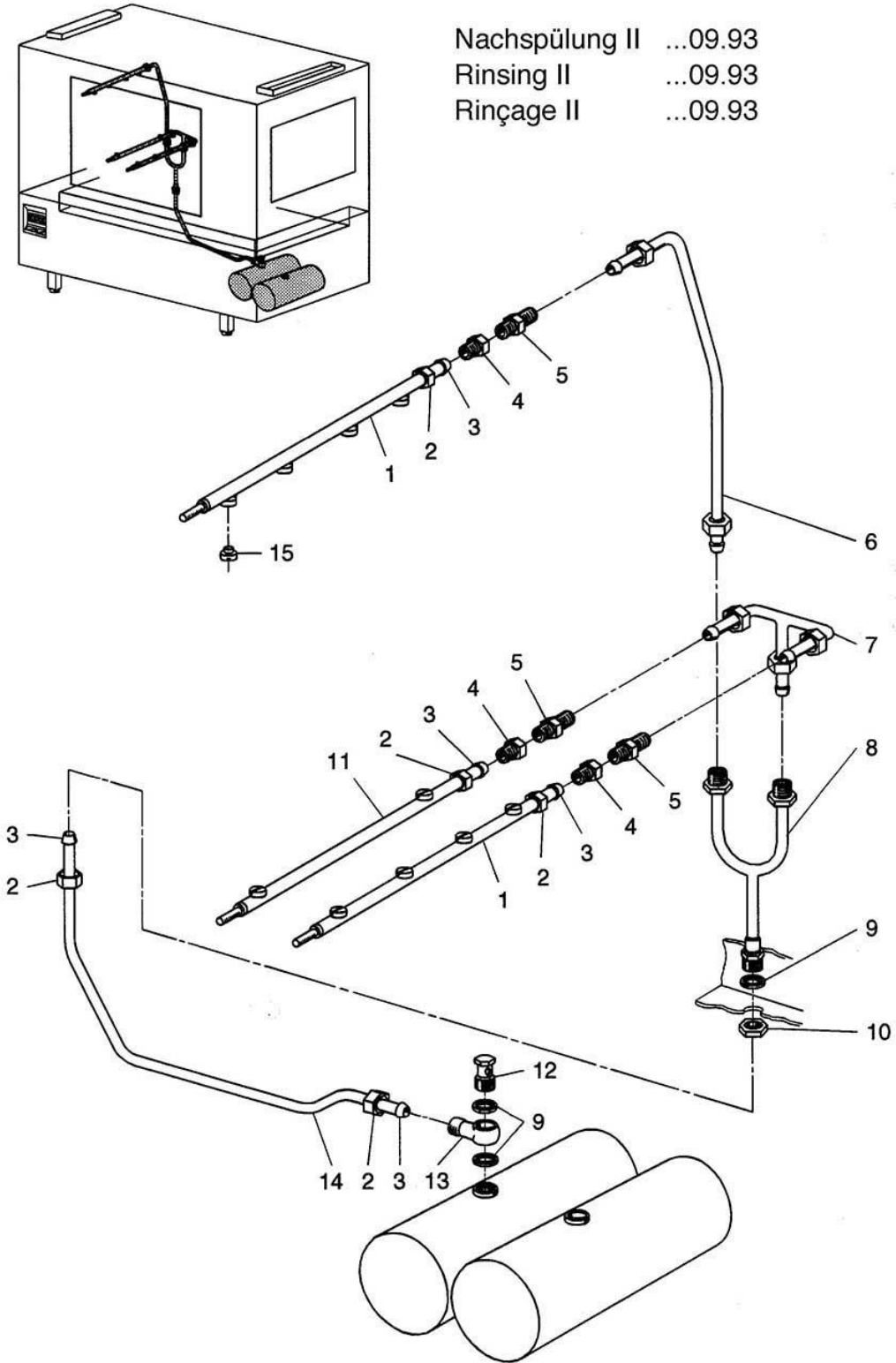
Pos.	Designation	Part no.	Pc.	Notes
1	Hollow screw connector SW30 x 40	28 13 013	★ 2	
2	Seal \varnothing 26 x \varnothing 21 x 2	27 04 006	★ 4	
3	Connection piece 1/2" BSP x 58	28 13 016	★ 2	
4	Retainer clip \varnothing 182 - \varnothing 202	28 02 121	★ 2	
5	Boiler retaining plate 1,5 x 110 x 380	61002039	★ 2	
6	Spring washer B 6	23 03 300	★	
7	Washer \varnothing 6,4	22 01 302	★	
8	Hexagon nut M 6	21 01 304	★	
9	Hexagon bolt M 6 x 10	20 01 332	★	
10	Safety thermostat, ON at 89°C, OFF at 93°C	31 25 022	★ 2	
11	Boiler body 2-holes cpl. (without heating)	55 12 032	★ 2	
12	Seal \varnothing 18 x \varnothing 10 x 1,5	27 03 003	★ 2	
13	Locking screw M 10 x 16	20 01 352	★ 2	
14	Heating element cranked 6 kW 230/400 V	31 03 017	★ 2	
15	Link wire insulation cpl. 2,5mm ² x 80	31 23 088	★ 2	
16	O-ring \varnothing 46 x 6	27 07 015	★ 2	
17	Hexagon nut PG 13,5	31 10 041	★ 2	
18	Clamping plate cpl.	55 19 018	★ 2	
19	Hexagon nut M 5	21 01 303	★	
20	Cover for heating element	31 03 014	★ 2	
21	Cable gland PG 13,5	31 10 040	★ 2	
22	Olive \varnothing 12	29 07 300	★ 10	
23	Coupling nut 1/2" BSP \varnothing 12,2 x 15	29 07 201	★ 10	
24	T-piece reduced 1/2" BSP x 3/8" BSP x 1/2" BSP	30 04 102	★	
25	Angle 1/2" BSP	30 02 301	★	
26	Coupling connector 1" BSP IG x 1/2" BSP	32 05 007	★ 2	
27	Reduction nipple 3/8" BSP x 1/4" BSP	30 06 124	★	
28	Male coupler 1/4" BSP straight	29 07 302	2	
29	Ball \varnothing 8	28 01 042	★	
30	Double nipple 1/2" BSP x 30	70000459	★	
31	Angle 1/2" BSP	30 02 101	★	
32	Pipe II boiler - rinsing (r-l)	70001510	★	
n.p.	Pipe II boiler - rinsing (l-r)	70001507	★	
33	Flow regulator 4 - 15 l/min 1" BSP x 1" BSP	32 05 006	★	
34	Pipe piece \varnothing 12 x 1 x 115	70001502	★	
35	Connection pipe \varnothing 12 x 1 x 545,5	70001508	★	
36	Thermostat 1750 lg., 230 V	31 25 013	★	
n.p.	Heating element 3 kW 230/400 V	31 03 027	★	
	Heating element 3 kW 240/420 V	31 03 029	★	
	Heating element 3 kW 254/440 V	31 03 028	★	
	Heating element cranked 6 kW 240/420 V	31 03 043	★	
	Heating element cranked 6 kW 254/440 V	31 03 034	★	
	Heating element cranked 9 kW 230/400 V	31 03 018	★	
	Heating element cranked 9 kW 240/420 V	31 03 057	★	
	Heating element cranked 9 kW 254/440 V	31 03 056	★	
	Heating element cranked 10,8 kW 230/400 V	31 03 058	★	
	Heating element cranked 10,8 kW 240/420 V	31 03 061		

WKTS-WZN 1500

Nachspülung II ...09.93

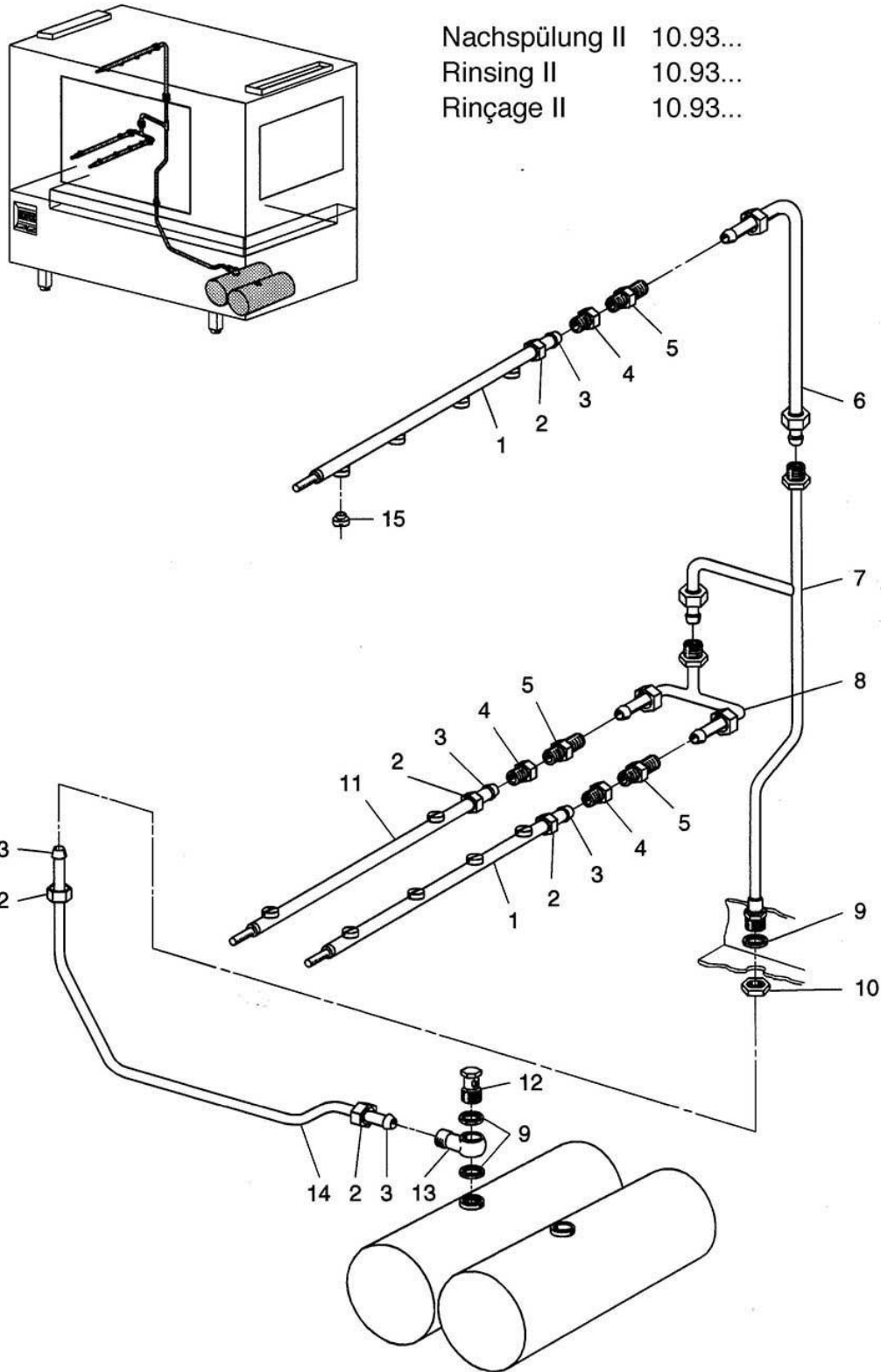
Rinsing II ...09.93

Rinçage II ...09.93



WKTS-WZN 1500

Nachspülung II 10.93...
Rinsing II 10.93...
Rinçage II 10.93...



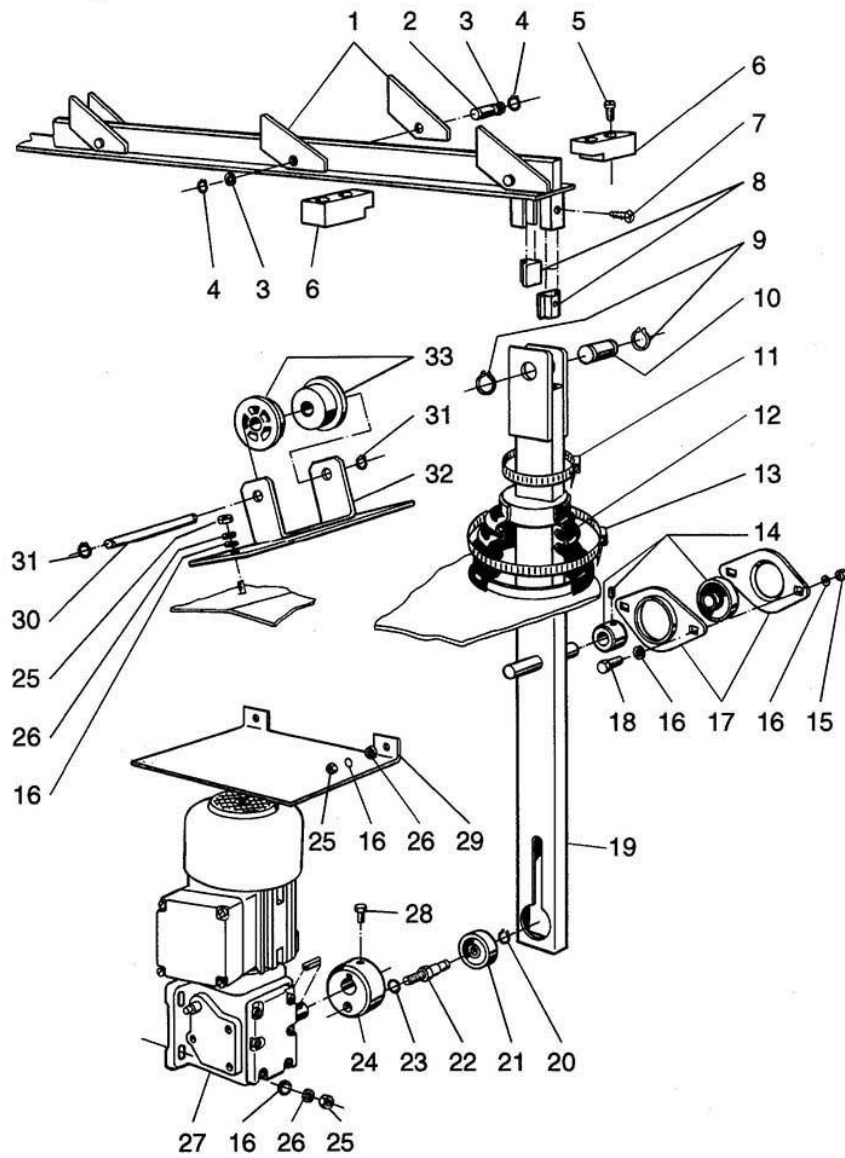
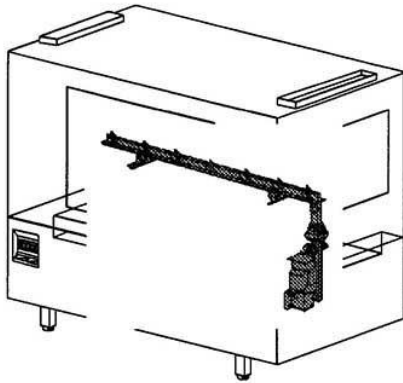
WKTS-WZN 1500

Rinsing II 10.93 ⇨

Pos.	Designation	Part no.	Pc.	Notes
1	Rinse arm III top cpl. (4 jets)	55 10 108 ★	2	until mach. no.: 367 255 with pos. 2, 3, 15
n.p.	Rinse arm III top cpl. (4 jets)	70001148	2	as from mach. no.: 367 256 with pos. 2, 3, and jet
2	Coupling nut 1/2" BSP x ø 12,2	29 07 301 ★	5	
3	Olive ø 12	29 07 300 ★	5	
4	Reduction nipple 1/2" BSP x 3/8" BSP x 18	30 11 303 ★	3	
5	Reduction nipple 1/2" BSP x 3/8" BSP x 25	30 11 302 ★	3	
6	Connection pipe ø 12 x 1,0 x 370	70001323		
7	Rinse manifold cpl.	70001317		
8	Manifold branch cpl.	70001321 ★		
9	Seal ø 26 x ø 21 x 2	27 04 006 ★	4	
10	Locking nut 1/2" BSP x 8	30 09 201 ★		
11	Rinse arm I bottom cpl. (2 jets)	55 10 106 ★	2	until mach. no.: 367 255 with pos. 2, 3, 15
n.p.	Rinse arm I bottom cpl. (2 jets)	70001149	2	as from mach. no.: 367 256 with pos. 2, 3, and jet
12	Hollow screw connector SW30 x 40	28 13 013 ★	2	
13	Connection piece 1/2" BSP x 58	28 13 016 ★	2	
14	Pipe I boiler - rinsing (r-l) ø 12 x 1 x 1146	70001505		
n.p.	Pipe I boiler - rinsing (l-r) ø 12 x 1 x 948	70001503		
15	Flat rinse jet 1/16"	29 10 312 ★	10	
n.p.	Flat rinse jet	29 10 313	10	as from mach. no.: 367 256

WKTS-WZN 1500

Antrieb
Actuation
Actionnement



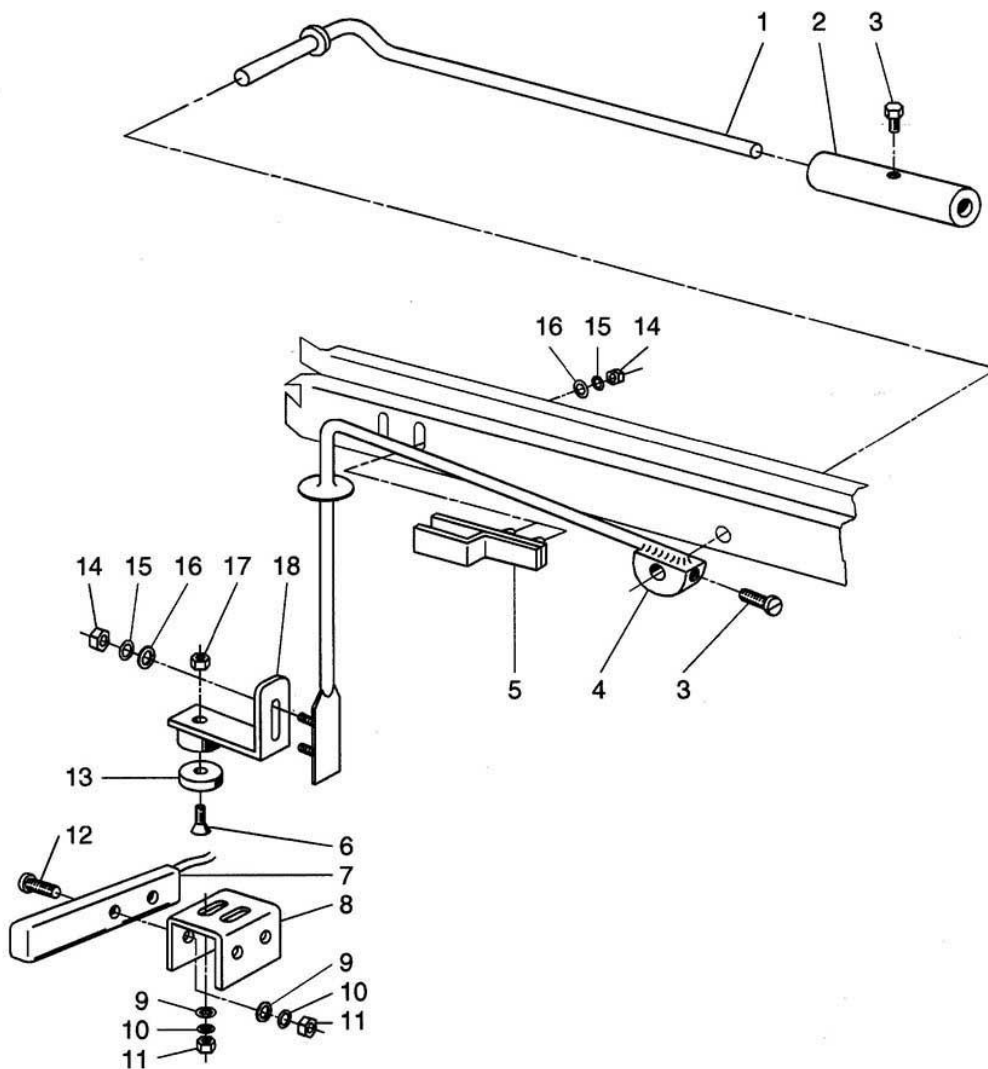
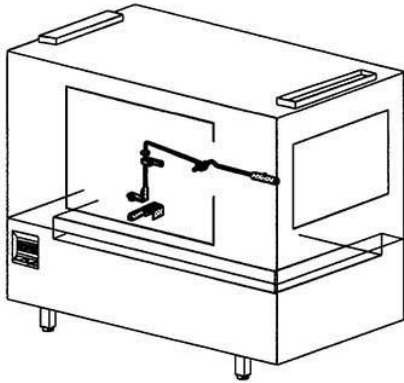
WKTS-WZN 1500

Drive

Pos.	Designation	Part no.	Pc.	Notes
1	Latch for connecting rod 4,0 x 48 x 67	55 16 069	★ 14	
2	Locking pin for connecting rod \varnothing 8 x 34	28 13 019	★ 7	
3	Washer \varnothing 8,5 x \varnothing 17 x 1,0	22 08 515	★ 14	
4	Cir-clip \varnothing 6	23 10 304	★	
5	Cylinder screw M 6 x 20	20 09 335	★	
6	Guide block	55 16 060	★ 4	
7	Sheet metal screw B 3,9 x 13	20 20 310	★	
8	Sliding block for connecting rod 18,5 x 19 x 30	55 16 092	★ 2	
9	Cir-clip \varnothing 15 x 1,0	23 10 300	★	
10	Retaining pin \varnothing 15 x 35,5	55 16 077	★	
11	Hose clip \varnothing 47 - \varnothing 67 x 12	28 02 303	★	
12	Bellows \varnothing 125 x \varnothing 55	40 07 027	★	
13	Hose clip \varnothing 122 - \varnothing 142	28 02 305	★	
14	Self-aligning ball bearing	28 01 008	★ 2	
15	Hexagon nut M 6	21 05 304	★	self-securing
16	Washer \varnothing 6,4	22 01 302	★	
17	Housing flange plate	28 01 053	★ 2	
18	Hexagon bolt M 6 x 16	20 01 306	★	
19	Drive rod cpl.	55 16 076	★	
20	Cir-clip \varnothing 12 x 1,0	23 10 302	★	
21	Bearing \varnothing 35 x \varnothing 12	28 01 016	★	
22	Eccentric bolt SW 17 x 50; M 10	28 13 020	★	
23	Spring washer A 10	23 03 303	★	
24	Eccentric pulley	70000514	★	
25	Hexagon nut M 6	21 01 304	★	
26	Spring washer B 6	23 03 300	★	
27	Gear motor 3 x 400 - 440 V 50/60 Hz	31 16 014		
	Gear motor 3 x 230 V 50/60 Hz	31 16 026		
28	Grub-screw M 6 x 8	20 30 304	★	
29	Cover plate for gear motor	70000515	★	
30	Retaining shaft \varnothing 8 x 58	28 13 021	★ 2	
31	Annular spring \varnothing 15,3 - \varnothing 16,3 x \varnothing 1,2	23 12 300	★ 4	
32	Spacer support cpl.	55 16 097	★ 2	
33	Spacer \varnothing 50 x 21	35 01 065	★ 4	
n.p.	Connecting rod cpl.	55 16 079	★	feed direction r-l
n.p.	Connecting rod cpl.	55 16 078	★	feed direction l-r
n.p.	Corner connecting rod cpl.	55 16 086		feed direction r-l
n.p.	Corner connecting rod cpl.	55 16 085		feed direction l-r
n.p.	Cam right - left	35 01 187		feed direction r-l
n.p.	Cam left - right	35 01 188		feed direction l-r

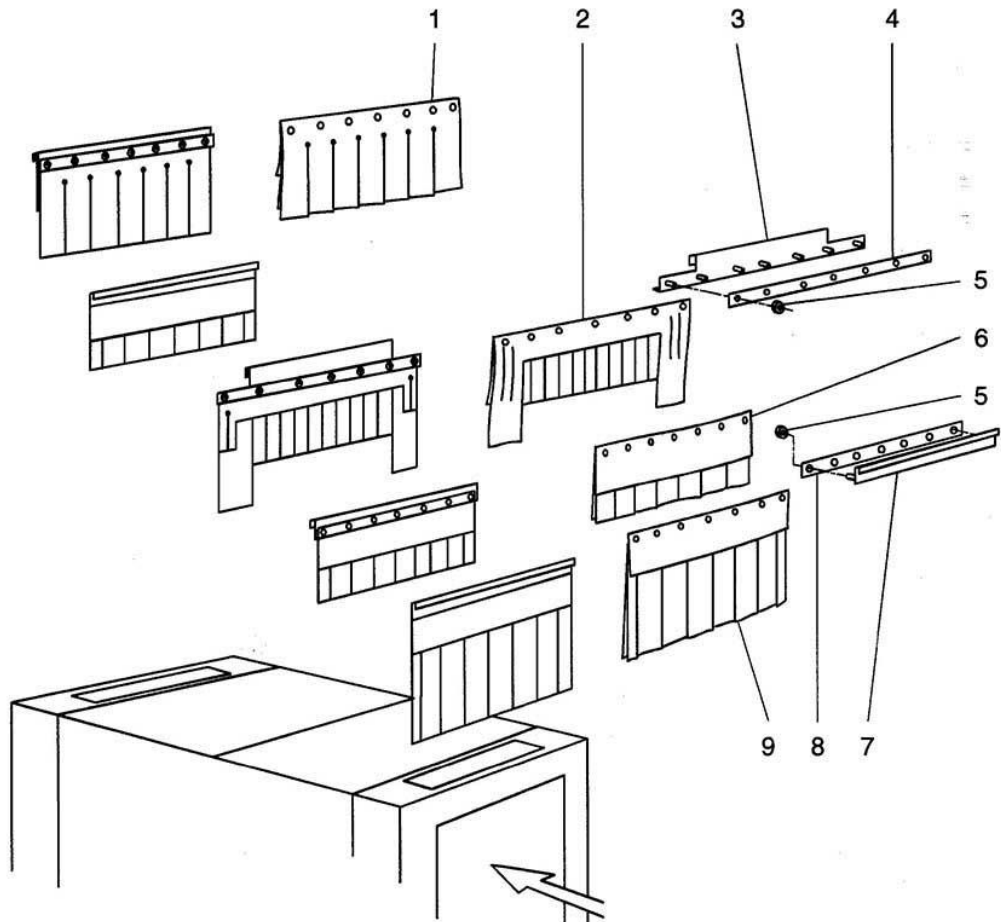
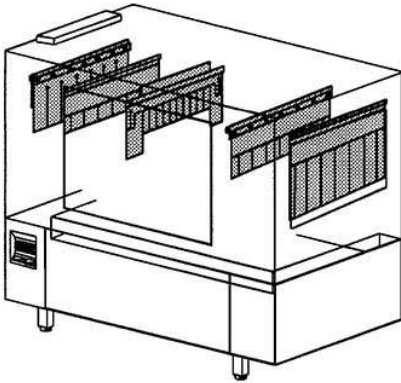
WKTS-WZN 1500

Periodische Nachspülung
Periodic rinsing
Rinçage périodique



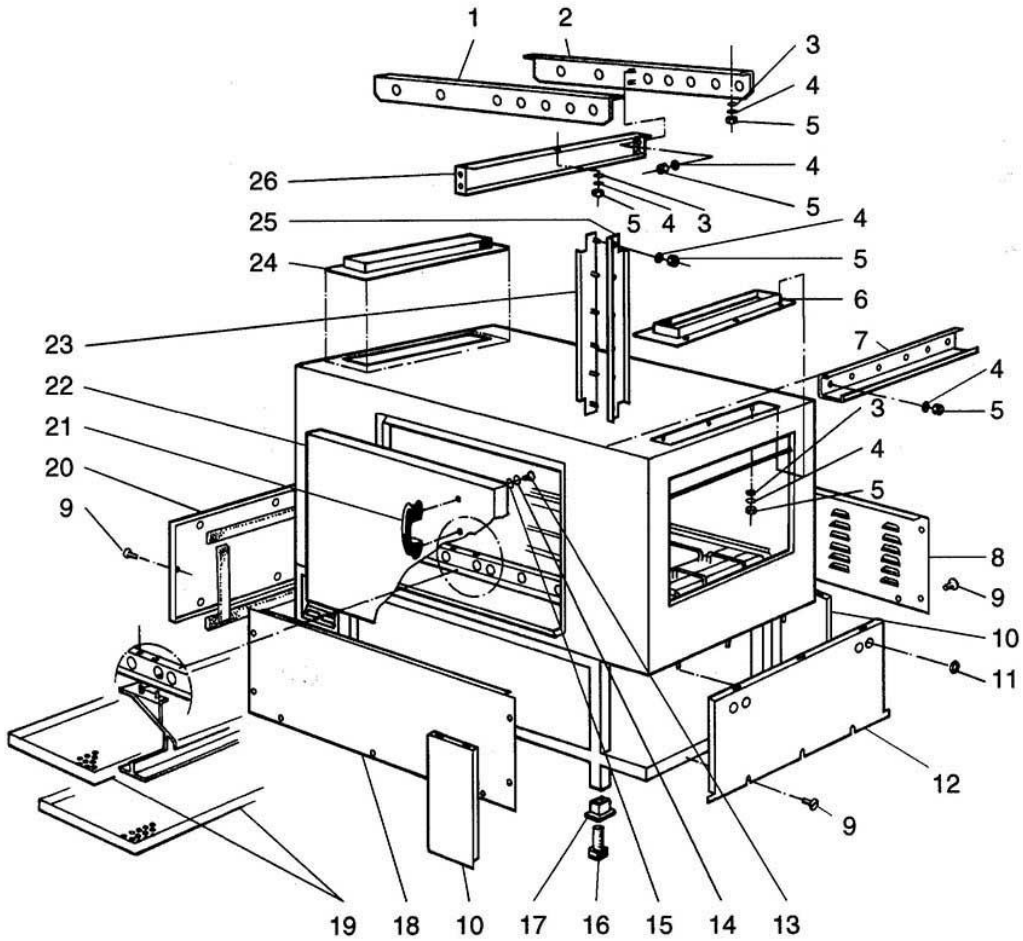
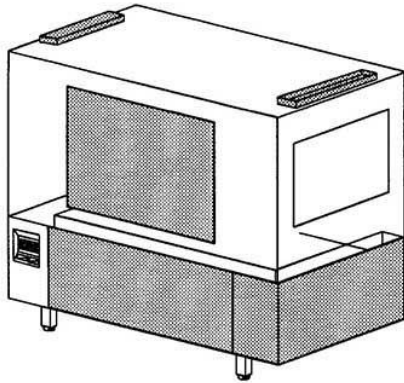
WKTS-WZN 1500

Vorhang
Curtain
Rideau



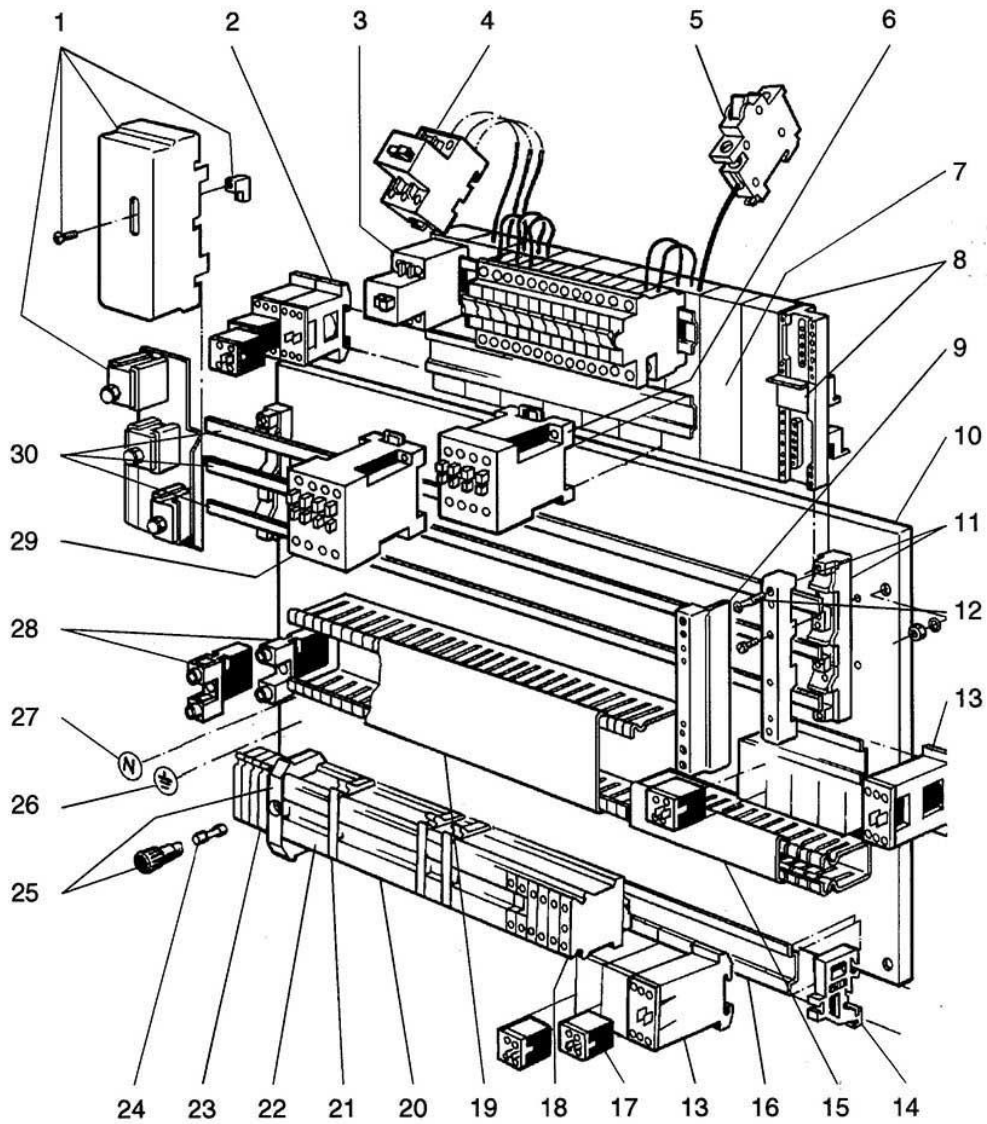
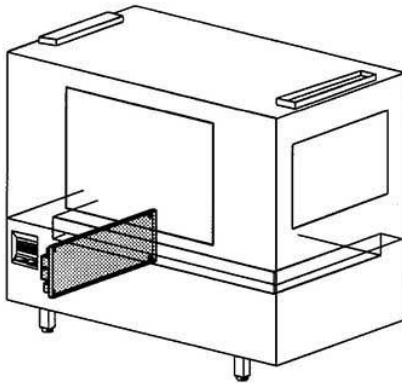
WKTS-WZN 1500

Gehäuse, Verkleidung
Housing, Panel
Boîte, habillage



WKTS-WZN 1500

Elektroteile I
Electrical parts I
Matériel électrique I



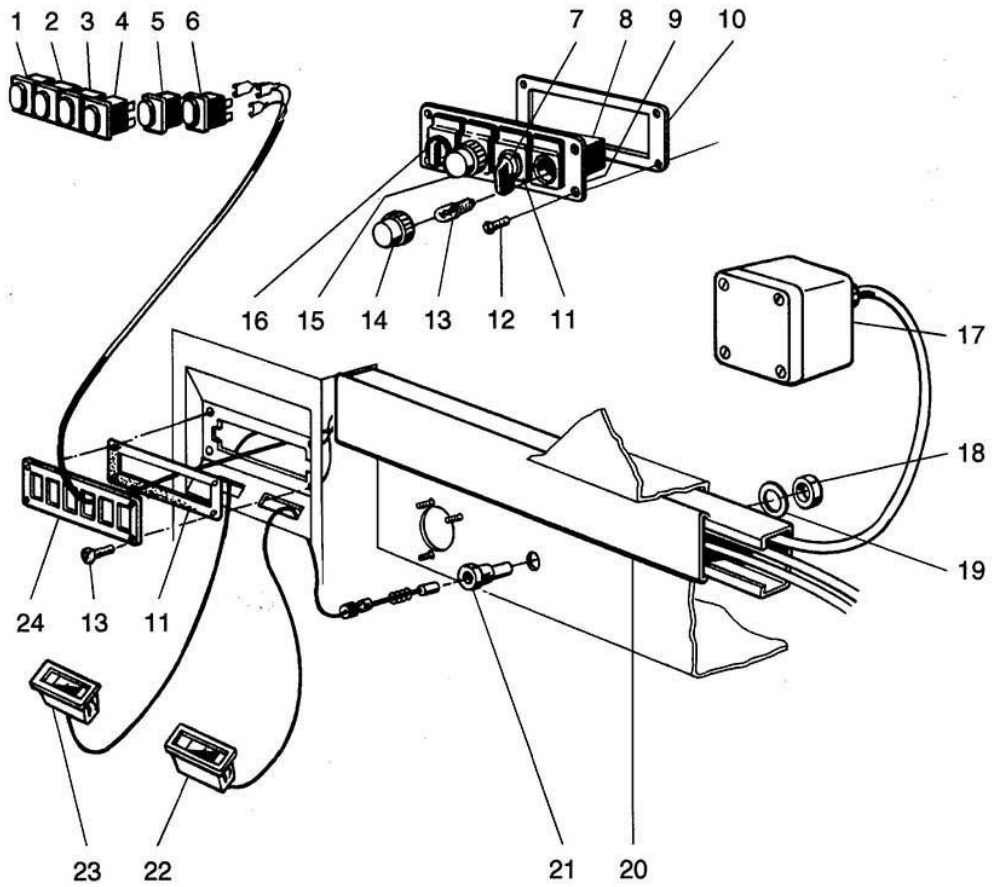
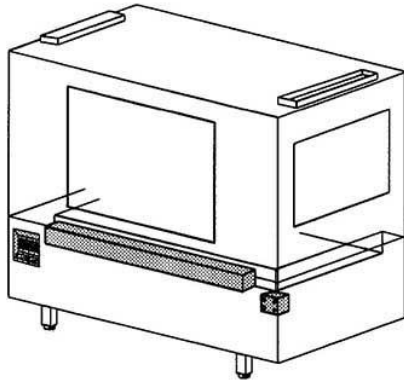
WKTS-WZN 1500

Electrical parts I

Pos.	Designation	Part no.	Pc.	Notes
1	Connection terminal plate 3-pole 60 - 120 mm ²	31 11 303	★	
2	Auxiliary contactor 2S 230-240V 50/60 Hz	31 04 115	★	8
3	Overload safety motor switch 0,4 - 0,63 A	31 11 202	★	
4	Overload safety motor switch 2,5 - 4 A	31 11 205	★	
5	Overload circuit breaker 10 A	31 11 110	★	Type and number depend on the installed heating elements see wiring diagrams
	Overload circuit breaker 16 A	31 11 100	★	
	Overload circuit breaker 20 A	31 11 111	★	
	Overload circuit breaker 25 A	31 11 104	★	
6	Contactor 3S, 1Ö B16 220-255 V 50/60 Hz	31 04 059	★	5
7	Busbar adapter 32 A	31 11 300	★	7
8	Cover	31 11 304	★	3
9	Main cover	31 11 302	★	2
10	Assembly plate cpl.	70001136		
11	Busbar support	31 11 301	★	2
12	Pan head screw M 5 x 20	20 10 325	★	4
13	Auxiliary contactor 1S, 1Ö 230-240 V 50/60 Hz	31 04 114	★	2
14	Terminal block E/UK	31 09 051	★	4
15	Cable trunking 30 mm wide, 65 mm high	31 20 103	★	
16	Din-rail	70001139		
17	Contact module PV 11	31 04 130	★	5
18	Terminal block yellow/green USLKG 10	31 09 059	★	2
19	Cable trunking 86 mm wide, 65 mm high	31 20 105	★	
20	Terminal block grey UK 5	31 09 049	★	42
21	Twin terminal UK 5 TWIN	31 09 115	★	3
22	Terminal block blue UK 5	31 09 050	★	5
23	Earth wire terminal block yellow/green USLKG 4	31 09 064	★	6
24	Fuse 6,3 A 250 V	31 11 043	★	2
25	Fuse cover grey UK 5	31 09 149	★	
26	Protection mark yellow/green	31 09 096	★	
27	Mark „N“ ø 16	31 09 156	★	
28	N-terminal	31 09 046	★	2
29	Contactor B9 3H, 1Ö 220-255 V 50/60 Hz	31 04 057	★	
30	Busbar 315 A	31 11 305	★	
n.p.	Isolating disk TS-K	31 09 066	★	3
n.p.	Neozed fuse 6 A	31 11 105	★	see wiring diagram
	Neozed fuse 10 A	31 11 106	★	
	Neozed fuse 16 A	31 11 107	★	
	Neozed fuse 20 A	31 11 108	★	
	Neozed fuse 25 A	31 11 109	★	

WKTS-WZN 1500

Elektroteile II
Electrical parts II
Matériel électrique II



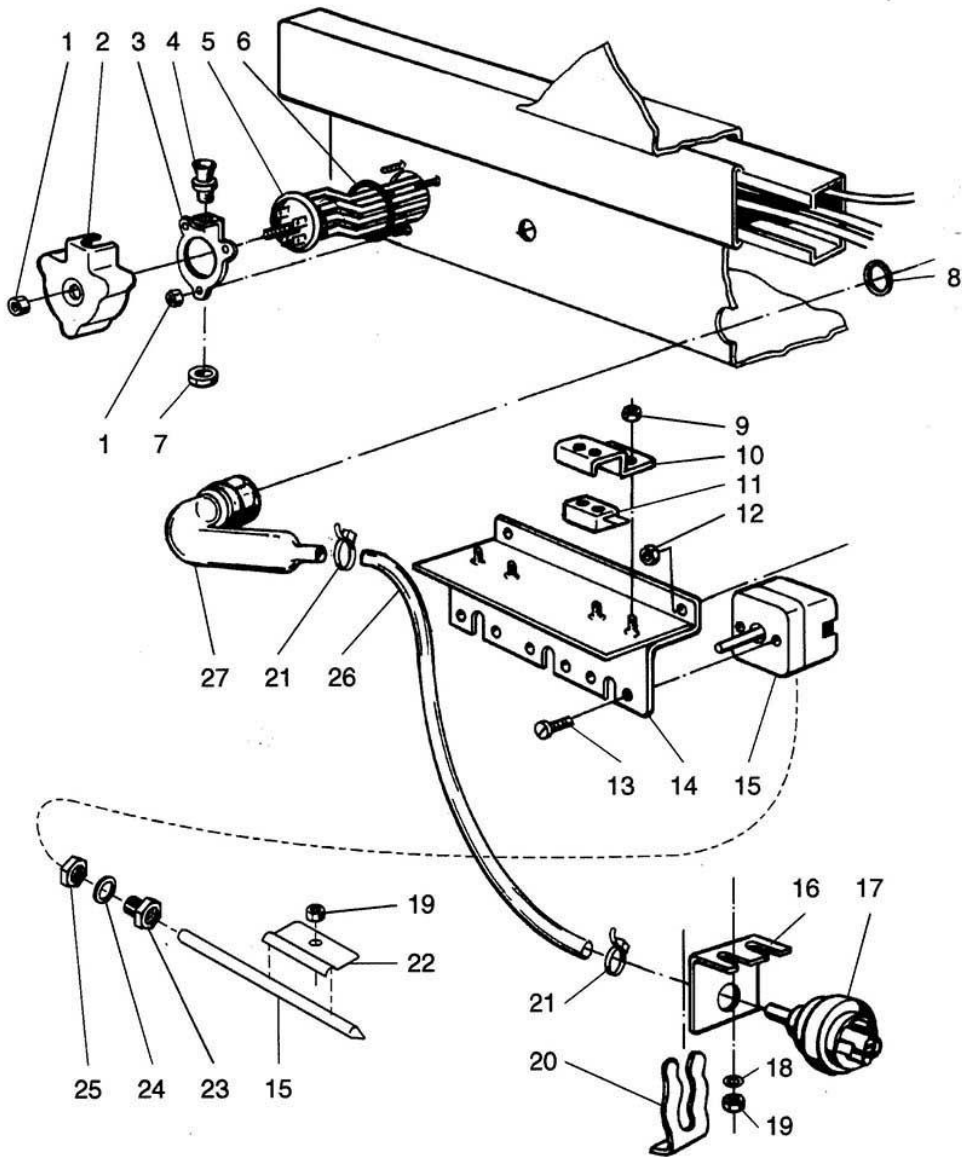
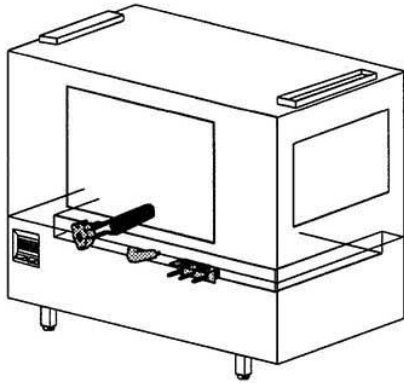
WKTS-WZN 1500

Electrical parts II

Pos.	Designation	Part no.	Pc.	Notes
1	Push switch red „off“ 250 V	31 24 161	★	as from 01.93
2	Push switch green „on“ 250 V	31 24 160	★	as from 01.93
3	Lamp „heating“ 230 V	31 08 116	★	as from 01.93
4	Push switch „programme I“ 250 V	31 24 162	★	as from 01.93
5	Push switch „programme II“ 250 V	31 24 163	★	as from 01.93
6	Push switch „stop“ 250 V	31 24 164	★	as from 01.93
n.p.	Contact jaw	31 24 145	★	until 12.92
7	Selector switch	31 24 150	★	until 12.92
8	Lamp socket frame 250V (load resist.: 130V 2,6W)	31 08 062	★	until 12.92
9	Mounting plate cpl.	31 24 038	★	until 12.92
10	Seal 2 x 70 x 160	70000435	★	
11	Plate support	31 24 148	★	until 12.92
12	Lens head countersunk screw M 4 x 12	20 12 315	★	
13	Filament lamp 130 V 2,4 W	31 08 022	★	until 12.92
14	Signal lamp attachment white	31 08 061		until 12.92
15	Signal lamp attachment green	31 08 060		until 12.92
16	Selector key	31 24 144	★	until 12.92
n.p.	Additional plate	31 24 146	★	until 12.92
n.p.	Insert plate blank	31 24 149	★	until 12.92
n.p.	Symbol programme cycle	31 24 127		until 12.92
17	Housing	31 18 061	★	
18	Hexagon nut M 14 x 1 x 5	31 25 002	★	
19	Seal \varnothing 20 x \varnothing 14,2 x 2	27 09 036	★	
20	Cable trunking cpl.	70000441	★	
21	Gland for thermometer M 14 x 1	32 01 030	★	
22	Thermometer boiler 85°C	32 01 036	★	
23	Thermometer tank 58°C	32 01 035	★	
24	Mounting plate cpl.	70000428	★	as from 01.93
n.p.	Additional plate „start“	31 24 147	★	until 12.92
n.p.	Fixing adapter	31 24 155	★	until 12.92

WKTS-WZN 1500

Elektroteile III
Electrical parts III
Matériel électrique III



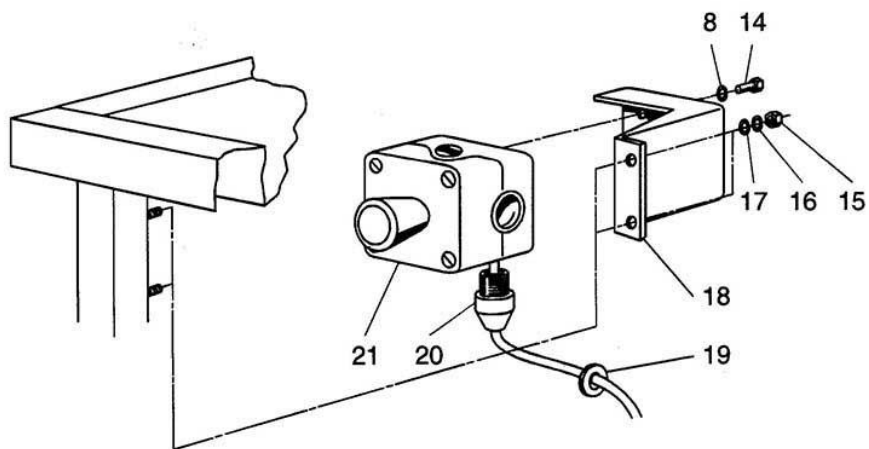
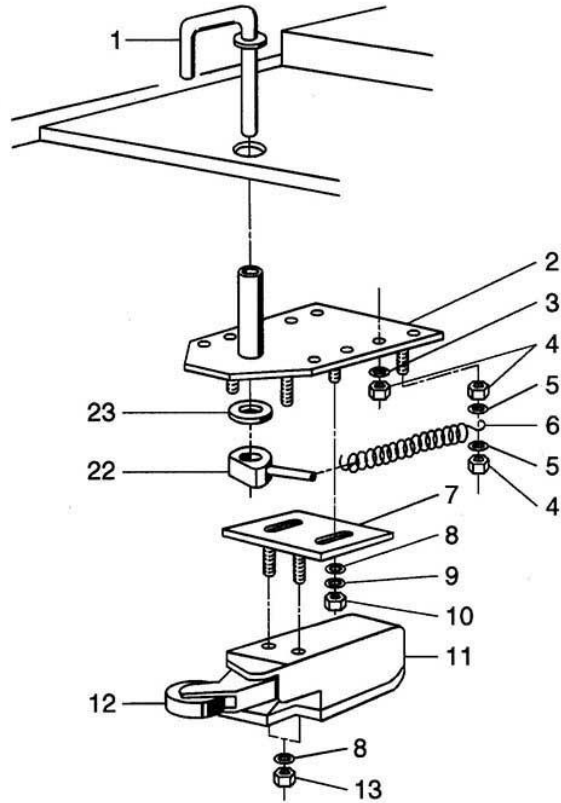
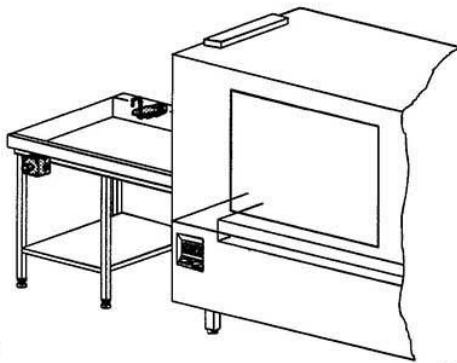
WKTS-WZN 1500

Electrical parts III

Pos.	Designation	Part no.	Pc.	Notes
1	Hexagon nut M 5	21 01 303	★	
2	Cover for heating element	31 03 014	★	
3	Clamping plate cpl.	55 19 018	★	
4	Cable gland PG 13,5	31 10 040	★	
5	Heating element cranked 6 kW 3 x 230/400 V	31 03 017	★	
6	O-ring \varnothing 46 x 6	27 07 015	★	
7	Hexagon nut PG 13,5	31 10 041	★	
8	Seal \varnothing 36 x \varnothing 26 x 2	27 01 003	★	
9	Hexagon nut M 4	21 05 300	★	self-securing
10	Support for safety thermostat	62001583	★	
11	Safety thermostat On at 89°C / Off at 93°C	31 25 022	★	
12	Hexagon nut M 6	21 05 304	★	self-securing
13	Lens screw M 4 x 8	20 10 310	★	
14	Thermostat support	70000111	★	
15	Thermostat 1750 lg. 230 V	31 25 013	★	
16	Level switch bracket	61002345	★	
17	Level switch green 105 / 75 \pm 5	31 26 003	★	
18	Washer \varnothing 5,3	22 01 300	★	
19	Hexagon nut M 5	21 05 302	★	self-securing
20	Retaining spring for level switch	31 26 001	★	
21	Hose clamp 188 x 4,8	31 20 015	★	2
22	Thermostat clamp	55 19 011	★	
23	Gland for thermostat	31 25 001	★	
24	Seal \varnothing 20 x \varnothing 14,2 x 2	27 09 036	★	
25	Hexagon nut M14 x 1 x 5	31 25 002	★	
26	Fabric hose \varnothing 5 x 3 x 800	40 01 024	★	per metre
27	Air chamber cpl.	55 04 024	★	
n.p.	Heating element cranked 6 kW 3 x 240/420 V	31 03 043	★	
	Heating element cranked 6 kW 3 x 254/440 V	31 03 034	★	
	Heating element 3 kW 3 x 230/400 V	31 03 027	★	
	Heating element cranked 9 kW 3 x 230/400 V	31 03 018	★	
	Heating element cranked 9 kW 3 x 240/420 V	31 03 057	★	
	Heating element cranked 9 kW 3 x 254/440 V	31 03 056	★	

WKTS-WZN 1500

Elektroteile IV
Electrical parts IV
Matériel électrique IV



WKTS-WZN 1500

Electrical parts IV

Pos.	Designation	Part no.	Pc.	Notes
1	Switching arm cpl. working range 40 mm	75009406	★	
2	Main plate cpl.	75009402	★	
3	Washer \varnothing 5,3	22 01 300	★	
4	Hexagon nut M 5	21 01 303	★	
5	Spring washer B 5	23 03 302	★	
6	Tension spring 70 x 8 x \varnothing 0,8	28 04 002	★	
7	Limit switch plate cpl.	75009405	★	
8	Washer \varnothing 4,3	22 02 302	★	
9	Spring washer B 4	23 03 304	★	
10	Hexagon nut M 4	21 01 302	★	
11	Limit switch 230/400 V	31 24 104	★	
12	Roller wheel	31 24 105	★	
13	Hexagon nut M 4	21 05 300	★	self-securing
14	Pan head screw M 4 x 12	20 10 312	★	
15	Hexagon nut M 6	21 01 304	★	
16	Spring washer B 6	23 03 300	★	
17	Washer \varnothing 6,4	22 01 302	★	
18	Support for emergency off switch	75009001	★	
19	Rubber bushing 9 x \varnothing 20 x \varnothing 36	31 10 100	★	
20	Cable gland PG 9	31 10 042	★	
n.p.	Bushing PG 16/9	31 10 116	★	
n.p.	Hexagon nut PG 16	31 10 110	★	
21	Emergency off switch cpl.	31 24 067	★	
22	Switch cam arm cpl.	75009409	★	
23	Washer	75009413	★	
n.p.	Table limit switch cpl. l-r	55 26 030	★	also for corner execution
n.p.	Table limit switch cpl. r-l	75009485	★	